

MIDJ
INITALY

Tavolo Suite

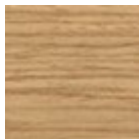
design AtelierNanni, 2017

Tavolo con base a quattro gambe in legno. Tiranti in acciaio verniciato, top a botte in cristallo o cristalceramica.



Colori e materiali

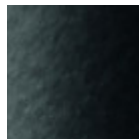
Struttura



Frassino tinto
8 Colori



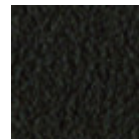
Acciaio Bianco



Acciaio Nero



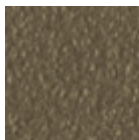
Acciaio Corda



Acciaio Marrone



Acciaio Grafite



Acciaio Fango



Acciaio Bronzo



**Acciaio Giallo
Pastello**



Acciaio Ocre



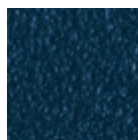
Acciaio rosso



Acciaio Verde Salvia



Acciaio Azzurro



Acciaio Blu Oceano



**Acciaio Grigio
Chiaro**



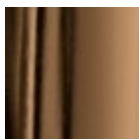
Acciaio Rosa Cipria



Oro Rosa



Nichel Nero

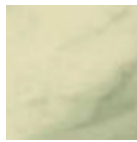


Bronzo Dorato

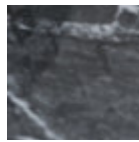
Rivestimento



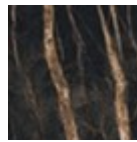
**Cristallo
Trasparente
Extrachiaro**



**Cristalceramica
marmo calacatta**



**Cristalceramica
Marmo Greco Nero
Lucido**



**Cristalceramica
Marmo Noir Desir**



**Cristalceramica
veneziano**

Dimensioni

Dimensioni

Dati volumetrici

Peso 123 Kg

Volume 0.82 mc

Colli 3

Image not found or type unknown

	A (cm) (inch)	B (cm) (inch)	C (cm) (inch)
220x116 (cm) (inch)	76 29.9	220 86.6	116 45.7
250x120 (cm) (inch)	76 29.9	250 98.4	120 47.2

Download

3D Suite 220x116 (zip) - <https://www.midj.com/images/uploads/resources/suite-220x116-3d.zip>

3D Suite 250x120 (zip) - <https://www.midj.com/images/uploads/resources/suite-250x120-3d.zip>